



The 6th Regional Scientific and Technical Committee Meeting for the SEAFDEC/UN Environment/GEF Project on Establishment and Operation of a Regional System of Fisheries *Refugia* in the South China Sea and Gulf of Thailand

4th – 6th July 2022
 SEAFDEC/Training Department, Samut Prakarn Province, Thailand

Logistic Information for Participants

QUICK LINKS (Click on title) to directly access the relevant text in this document

<p>Meeting Venue</p>	<p>Accommodation</p>	<p>Transportation</p>
<p>Registration</p>	<p>Weather</p>	<p>Currency and DSA</p>
	<ul style="list-style-type: none"> Meal Wi-Fi Visa Requirements Time Zone Electricity Health Reception Dinner 	
<p>Meeting Documents</p>	<p>Other Information</p>	<p>Local Contact Point</p>

Dear Participants,

Welcome to Thailand! To facilitate your travel preparations, please be noted that the Entry Measures for Thai and Foreign Nationals (From 1 July 2022) that you need to bring with you is a Certificate of vaccination or an RT-PCR / Professional ATK COVID-19 test result (in case you did not get a vaccination at all) issued within 72 hours before departure. Accordingly, Airlines will check your documents before issuing the boarding pass, and at the arrival hall of Suvarnabhumi International Airport, the quarantine officer may randomly check your certificate. Please also be kindly find below information on logistic arrangements.

1. MEETING VENUE

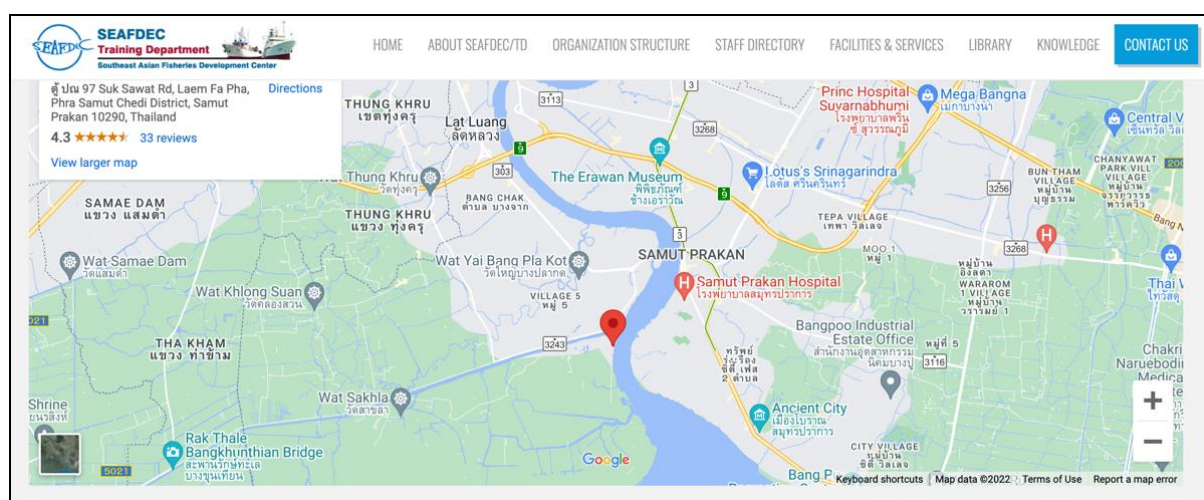
The events will be held at Southeast Asian Fisheries Development Center/Training Department (Conference Room).

Address: Southeast Asian Fisheries Development Center/Training Department,
Phasamutchedi Samut Prakan 10290, Thailand
Phone: +66 2425 6100
Fax: +66 2425 6110 to 11
E-mail: td@seafdec.org



SEAFDEC/TD Map

<http://www.seafdec.or.th/home/contact-us-seafdec-td>



SEAFDEC/TD is about 1 hour drive from Suvarnabhumi International Airport. It is located Phasamutchedi district, Samutprakarn Province.

2. ACCOMMODATION

The organizers will take the responsibility for booking and paying for accommodation cost of the representative which cover room charge (single room) with breakfast only. Personal expenditures i.e. minibar, telephone, laundry or for any other expenses incurred by participants.

For non-sponsored participants or participant's spouse, the expenses will be on their own responsibility. Please contact the organizers in advance for hotel booking. In case of cancellation will follow to cancellation policy of the hotel.

Hotel Facilities

The hotel called "14 Residence" is located in 119 Moo 4 Suksawat, Bang Phueng, Phra Pradaeng, Samut Prakan, Thailand. 10130, South Thonburi, Bangkok, Thailand, 10130. There are 1) Free Wi-Fi in all rooms 2) Daily housekeeping 3) Daily housekeeping 4) Elevator 5) Free car park.

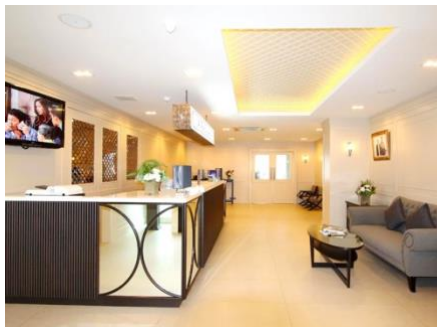
In addition, 14 Residence is closed by 2 main shopping malls, including HomePro and Big C. These are where you can go and enjoy yourselves there.



Deluxe Double



Restaurant for breakfast



Reception Desk



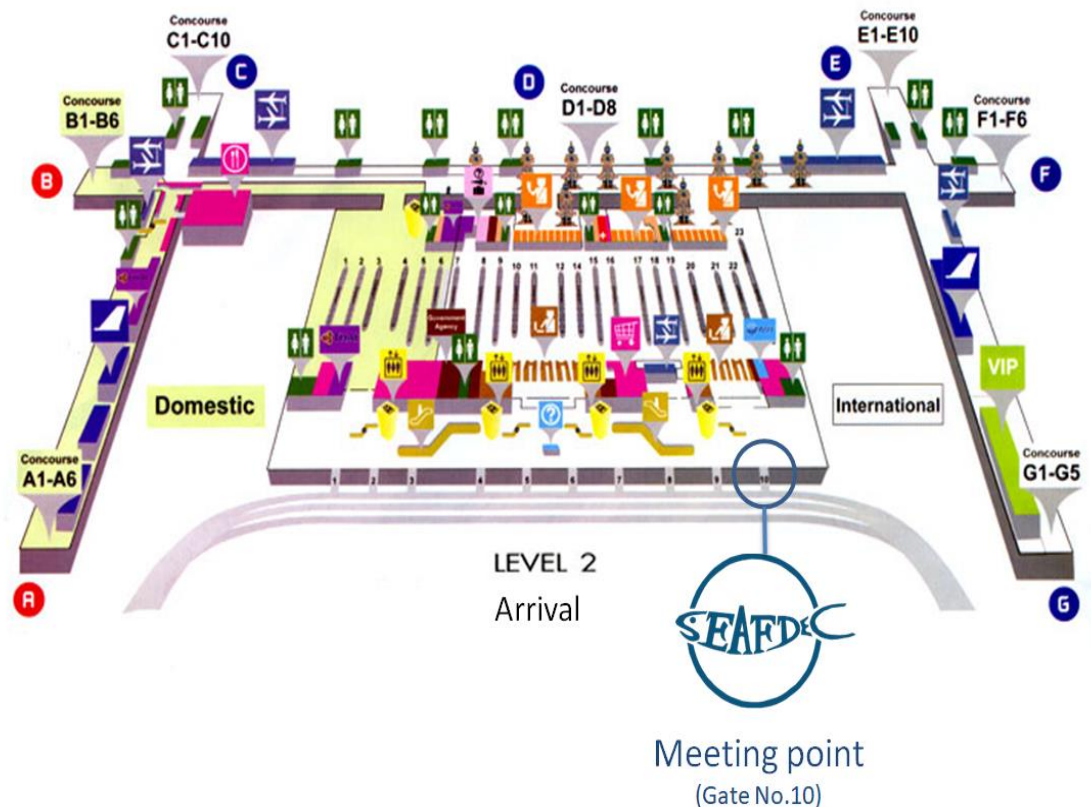
Parking

3. TRANSPORTATION

3.1 From airport to hotel

The destination airport of this Meeting is "Bangkok's Suvarnabhumi International Airport", Thailand. All sponsored participants will be met and transferred by SEAFDEC upon the arrival flight. Driver of SEAFDEC/TD can be identified by SEAFDEC Logo at the Exit Gate number "10" at Arrival Level. Our Staff/Driver parking their VAN outside the Gate-10.

It takes approximately 1.5 hours to the venue. The bus will take you directly to the hotel. However, the bus can stop any time as request.



3.1 From hotel to SEAFDEC/TD (meeting venue)

The organizer will provide Shuttle Bus to the meeting venue. The bus will depart from 14 Residence at 7:45 a.m. It is suggested to arrive at the meeting point 15 minutes before the departure time.

4. REGISTRATION

The registration desk will be opened at **08:15** am at SEAFDEC/TD conference room. All participants are requested to sign on the meeting attendance every day for our finance record.

5. WEATHER

The average temperature at this time of the year may range between 27°C and 34°C. The weather is quite hot in July in Samutprakarn and Bangkok. The average daily maximum is 32°C and the average daily minimum is 27°C. If you can bear the heat and humidity, the weather during this time is generally sunny days with occasionally heavy downpours. Someday Cloudy; a thunderstorm in spots in the morning followed by a couple of thunderstorms around in the afternoon.

Since the meeting room is air-conditioned, it can be rather cold inside. The dress code for the meeting is not specific, smart casual, a light jacket, shawl or any that would be appropriate.

6. CURRENCY AND DSA

The official currency of Thailand is the Thai Baht. The commercial rate is subject to change daily (SEAFDEC Fixed Rate at USD1 = THB33.15). There are banks and currency exchange kiosks located at the airport, but you may exchange from the hotel cashier as well.

All major credit cards are widely accepted at banks, hotels, restaurants and shopping centers. Participants are advised to exchange some local currency prior to your departure, or at the airport upon your arrival.

Daily Subsistence Allowance (DSA) and Terminal expenses, including taxi from home to airport will be provided to all sponsored participants in Thai Baht on the first date of the meeting.

7. MEETING DOCUMENT

The meeting documents are uploaded to the Refugia Website: <https://fisheries-refugia.org>

8. OTHERS INFORMATION

8.1 Meals

The organizers are sponsoring 1 lunch and 2 coffee breaks per day for the duration of the events. Unless otherwise indicated, participants are responsible for their own dinner.

All the participants are invited to join us at the reception dinner at the **Alangka Cruise**, which is an elegance luxury dinner cruise on the Chaophraya River.

8.2 Wi-Fi

Free Wi-Fi will be available throughout the meeting venue. The password will be informed later when you arrive.

8.3 Visa Requirements

It is a responsibility for participants to apply for Thailand Visa and any transit countries if it is needed, including the securing of such visas. However, there is no VISA requirement for all ASEAN Member States.

Each participant should ensure that his/her passport is valid for at least 6 months from his/her travel dates. If a visa to Thailand is needed, the application process should begin immediately. Please contact the Royal Thai Embassy or Thai Consulate in your country or check: https://www.immigration.go.th/en/?page_id=2771 for more information on visa requirements and applications.

8.4 Time Zone

Bangkok Standard Time (CST) is 7 hours ahead to the Universal Time Coordinated (UTC).

8.5 Electricity

The electrical currents in Thailand are 220 volts with the following the electrical outlets. Please bring a suitable adaptor if needed.

Two pin flat (US Type) and Round (European type)



8.6 Health

All participants are required to obtain medical insurance for the duration of the event prior to your departure. For more health information for travelers to Thailand, please click on [this link](#) to read the CDC website. The government of Thailand requires proof of yellow fever vaccination only if you are arriving from a country with risk of yellow fever.

In case you have an urgent need for medical treatment during the workshop or meeting, please contact the hotel's information desk (available for 24 hours). The hotel has a first-aid kit available for basic medical care.

Important phone numbers include:

Emergency Services	Telephone
Tourist Police	1155
Police (General Emergency Call)	191
Ambulance and Rescue	1554
Fire	199
National Disaster Warning Centre	1860
Crime	1195
Medical Emergency Call	1669
Private Air Ambulance (Siam Air Care)	02 586 7654

8.7 Reception Dinner

Reception dinner will be held on Tuesday 5th July, 2022. The PCU staff will take you to the Alangka Cruise, which is an elegance luxury dinner cruise on the Chaophraya River.



Cruise 's Itinerary

- 04.00 p.m. All participants leave SEAFDEC/TD for ICON SIAM (temporary stop at Hotel)
05:00 p.m. Arrival at ICON SIAM, free and refreshment
06:30 p.m. The cruise counter is open for check-in to Alangka Cruise at ICONSIAM (G Floor); all participants must assemble for check-in on G Floor (PCU staff will inform the location when we arrive at ICON SIAM).
07.15 p.m. Departure from the pier. (In case Participants miss the cruise, they have to wait at ICON SIAM until the cruise back to Pier).

Time for your dinner under the candle light with live music by professional singer in a romantic atmosphere taste of our international buffet function and sea food elegantly arrange from appetizer to main course and ending with desserts to your dinning satisfaction and enjoy with traditional show of Thai classical dancing performance onboard The Bangkok Dinner Cruise. The Cruise will lead you passing the Chaophraya river highlights & attraction such as; Santa Cruz Church, beautiful Buddhist temples, Wat Arun Temple of Dawn, The Royal Grand Palace, Rama 8 bridge and so on.

- 09.30 p.m. Arrived to the ICONSIAM pier.

9. LOCAL CONTACT POINT

Should you have any questions or require any assistance during the event, please feel free to contact:

Ms. Nathacha Sornvaree

Secretary of the Project Coordinator Unit
SEAFDEC/Training Department
P.O Box 97 Phrasamut-chedi, Samutprakarn 10290, Thailand.
Tel: +66 (0) 2425-6166 (Direct Line)
Mobile: +66 (0) 81-451-4925
E-mail: natha@seafdec.org

Ms. Chanikan Vibulsuk

Project Technical Administration Officer of the Project Coordinator Unit
SEAFDEC/Training Department
P.O Box 97 Phrasamut-chedi, Samutprakarn 10290, Thailand.
Tel: +66 (0) 2425-6150 (204)
Mobile: +66 (0) 80-963-991
E-mail: chanikan.vibulsuk@gmail.com

*The meeting organizers disclaim all responsibilities for medical, accident and travel insurances, for compensation for death or disability compensation, for loss of or damage to personal property and for any other losses that may be incurred during travel time or the period of participation. In this context, **it is strongly recommended that participants will secure international medical, accident and travel insurances for the period of participation prior to departure.***

Finally, we wish you an enjoyable event in Thailand!



Project Director,
SEAFDEC/UNEP/GEF Project on Fisheries *Refugia*